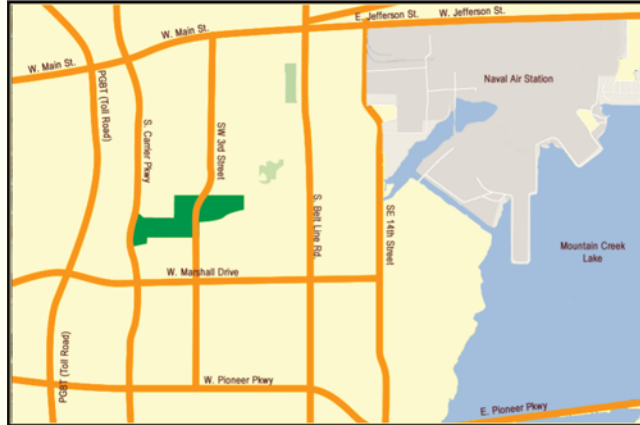


## Interior Features

- Ceiling Fans
  - Handicapped Accessible
  - Frost Free Refrigerators with Ice Makers
  - Built-in Microwaves
  - Full Size Washer / Dryer Connections
  - Built-in Bookshelves / Entertainment Centers\*
  - Walk-in Closets\*
  - Pre-wired for Cable Television
  - Telephone & Internet
  - Kitchens with Pass-through Breakfast Bar
  - Garden Tubs\*
  - Linen Closets\*
  - Faux Blinds
  - Patios & Balconies
  - Laminate Wood Flooring\*
  - Energy Efficient
- \* In Select Units

## Exterior Features

- Gated Community
- On-site Laundry Facility
- Inviting Pool with Spa & Fountain
- Playground
- Fitness Center
- Computer Center
- Planned After School Activities
- Covered Parking
- Garages
- Storage Rooms



From 30 West take Beltline exit and go south to Skyline Rd. and turn left on Skyline Rd. The property will be on your right, directly before 14th street.

Management Office:  
1350 Skyline Rd.  
Grand Prairie, TX 75051

**(972) 262.9100**

**Fax: (972) 262-9103**

manager@homesofmountaincreekapts.com



Professionally managed by:



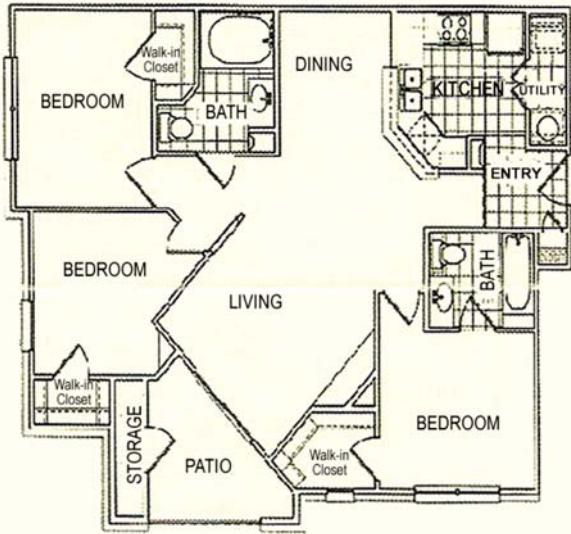
The Homes of  
**Mountain Creek**

*Experience Luxury  
at an  
Affordable Price!*



[homesofmountaincreekapts.com](http://homesofmountaincreekapts.com)

**(972) 262.9100**

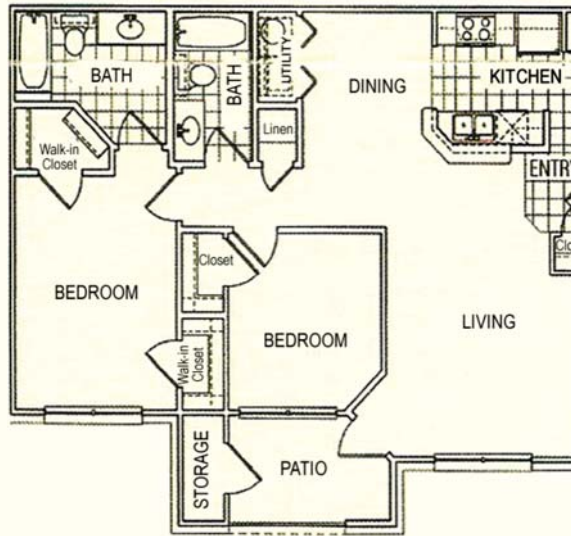


**Unit C1**  
3 Bedroom / 2 Bath  
Approx. 1096 Sq. Ft.\*

Rent \_\_\_\_\_  
Deposit \_\_\_\_\_

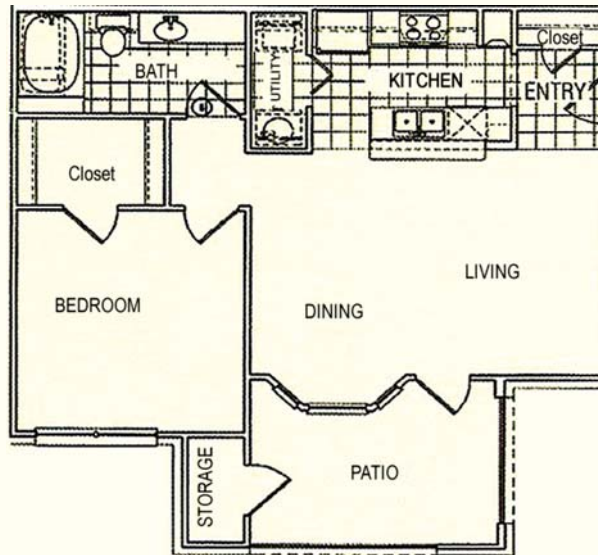
**(972) 262.9100**

\*All square footage is approximate



**Unit B1**  
2 Bedroom / 2 Bath  
Approx. 967 Sq. Ft.\*

Rent \_\_\_\_\_  
Deposit \_\_\_\_\_



**Unit A1**  
1 Bedroom / 1 Bath  
Approx. 741 Sq. Ft.\*

Rent \_\_\_\_\_  
Deposit \_\_\_\_\_

